



**AMBER**COMPOSITES

We develop the highest quality composite material, provide technical service that goes above and beyond the expected, and set the industry standard for response times.



We serve a wide variety of industries worldwide including Aerospace, Automotive, Marine, Communications, and more.





#### HIGH TEMPERATURE PERFORMANCE



##### Exhaust Area and Brake Ducts

- ▶ C740 Cyanate ester prepreg

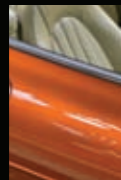
#### STRUCTURAL PERFORMANCE



##### Chassis Components

- ▶ E730 Resin system in unidirectional and woven carbon prepreg
- ▶ 5056 Flex-Core® honeycomb
- ▶ ES72A Amspand expanding epoxy core
- ▶ EF72 Epoxy structural film adhesive

#### LOW TEMPERATURE CURING



##### Door

- ▶ Multipreg E650 prepreg system in carbon/aramid hybrid
- ▶ Nomex® Honeycomb core
- ▶ EF44 Adhesive film

#### AESTHETIC APPLICATIONS



##### Interior

- ▶ Multipreg 8020 clear prepreg system in woven carbon
- ▶ SC8020A Amlite low temperature curing epoxy syntactic core

#### RAPID LAMINATING



##### Exterior panels

- ▶ 8020 Rapi-Ply woven carbon
- ▶ 8020 Rapi-Core
- ▶ 8020 Surface Film
- ▶ SC 8020 Epoxy resin film

#### COMPOSITE TOOLING

##### All parts

- ▶ High-performance tooling block materials
- ▶ EC85 Epoxy surface coat
- ▶ HX-series tooling prepreg
- ▶ Cellite 180 composite backing boards

# An Example Solution

## Composite Materials

Component Prepreg  
Tooling Prepreg  
Core Materials  
Structural Panels

## Tooling Materials

Boards  
Pastes  
Liquid Resin Systems  
Close Contour Casting

## Adhesives

Adhesive Films  
Acrylics  
Epoxies  
Urethanes

Our composite materials reduce weight, cut emissions, and increase performance.

**Composite Materials** We've been developing and refining resin systems for decades and our R&D team consistently keeps us [at the forefront of technology](#). We offer component and tooling prepreg systems for a wide range of processing parameters and end-uses. You'll find both woven and unidirectional prepreg with curing temperatures from 50°C/122°F to 175°C/347°F and end-use temperatures as high as 344°C/652°F. We've developed flexible manufacturing techniques to provide [just-in-time delivery](#) so our lead times are often the fastest in the industry.

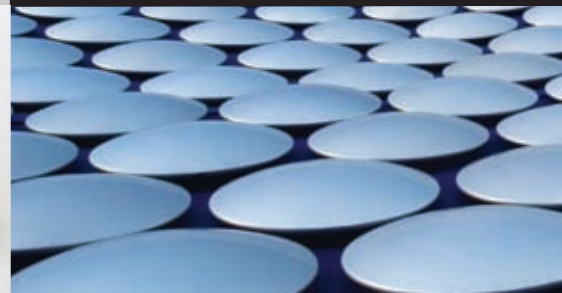
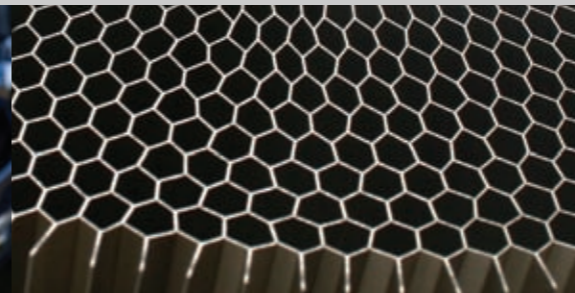
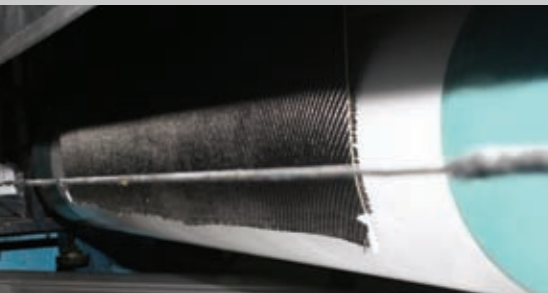
We offer many types of core, used to increase [strength and stiffness](#) with a sandwich structure of lightweight material between aluminum sheet or carbon/glass fiber skins. High strength and stiffness is achieved without the increased weight associated with solid laminates. We process traditional Nomex® and aluminum honeycomb in a range of densities and grades as well as more specialized Flex-Core® and Kevlar® and we have the largest independent core cutting and expanding operations in Europe. Where panel thickness or complexity make the use of traditional core

materials impractical, we offer a range of syntactic core that can be used on its own or to supplement other types of core. All is made and cut to order to desired dimensions and tolerances.

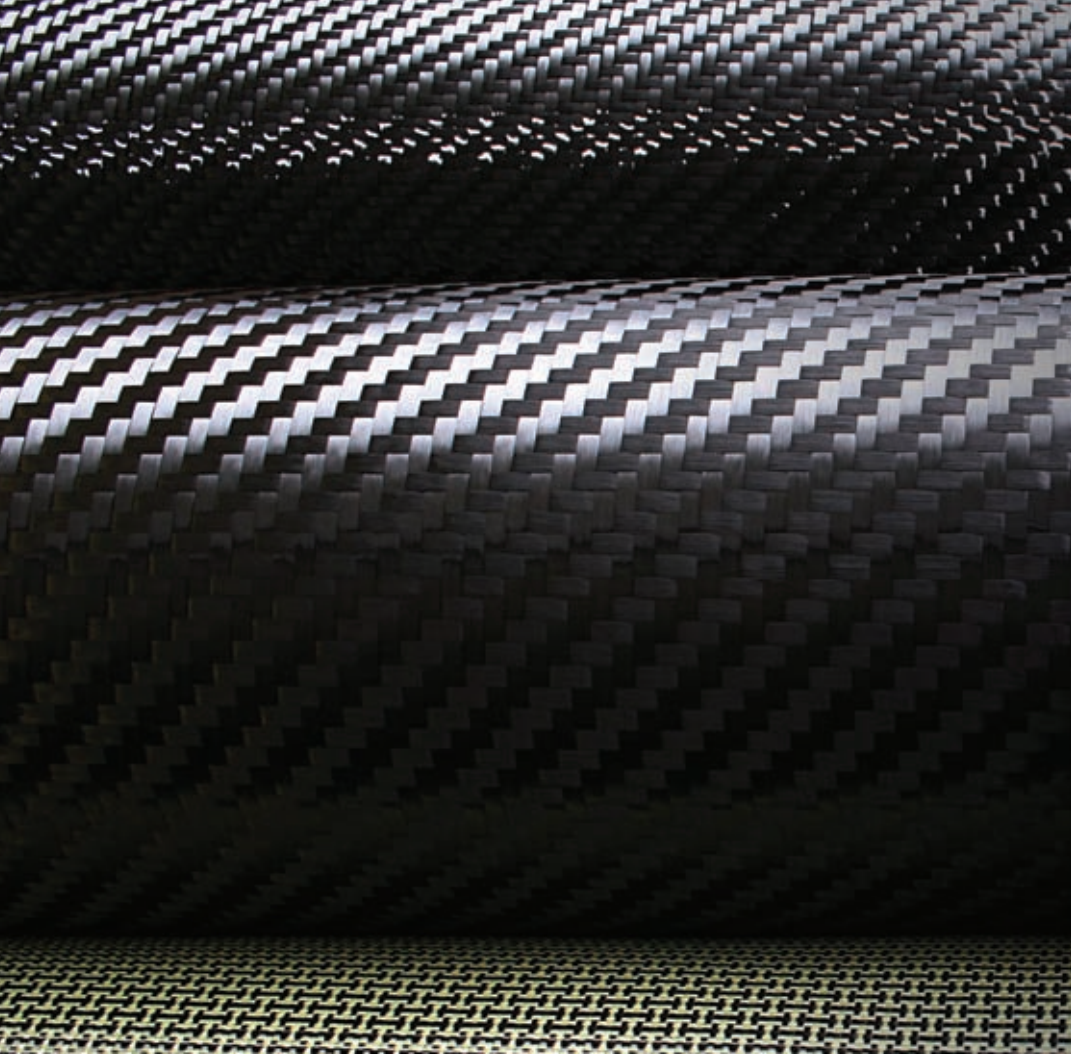
**Tooling Materials** Our tooling material is used for [prototyping, modelling, casting, laminating, and volume production](#). Products from liquid resins to tooling block complement our tooling prepreg and both are typically specified together. We have searched for the highest quality supporting products and partnered with best-in-class companies including Rampf and Wacker so that we can deliver a complete solution of products that are proven to work well together.

**Adhesives** In addition to our own [adhesive films](#), we distribute materials from well-known suppliers such as Lord and Soudal. Products include modified acrylics, epoxies, urethanes, sprayable contact adhesives, structural tapes and superglues® as well as a range of industrial sealants.

## Product Detail







Worldwide Headquarters

**Amber Composites**

94 Station Road  
Langley Mill, Nottingham,  
NG16 4BP United Kingdom

T +44 (0)1773 530899

F +44 (0)1773 768687

[sales@ambercomposites.com](mailto:sales@ambercomposites.com)

[www.ambercomposites.com](http://www.ambercomposites.com)

**AMBER**COMPOSITES